



# SCANDIC KØDBYEN

## General

- Free WiFi throughout the hotel
- Bar and restaurant
- Shop open 24 hours
- Modern gym and sauna
- Parking under the hotel (fee payable)

## Rooms

- 370 rooms
- 10 disability rooms
- Online check-out

## Meetings, conferences and banquets

- 1 Ballroom
- 11 meeting rooms
- Modern AV equipment
- Breakout areas

## Location

- 800 m to Copenhagen Central Station
- 1.5 km to City Hall Square
- 8.5 km to Copenhagen Airport

Scandic Kødbyen is an inspirational and unusual hotel perfectly located in Copenhagen's trendy Meatpacking District. Its low buildings and distinctive look make the hotel a perfect match for the rustic setting of the Meatpacking District, adding new life to the streetscape.

The hotel's design embraces everything and everyone entering it. It is both vibrant and intimate and has a creative meeting section, "The Meeting Agency", in a new, unconventional environment, is a perfect setting for meetings of any size.

The smartly decorated rooms will make sure you will get a good night's sleep. Take a seat in the large lounge area, where you can relax, work and be inspired for new ideas or have a great cup of coffee in the hotel's lobby. The ambience of the hotel's MØR Restaurant & Bar is laid back and you can sense the positive vibes from the kitchen. Here you can start the day well, with the extensive Scandic breakfast buffet.

There is underground paid parking.



The only hotel chain in Denmark with Nordic Swan ecolabel









Organic Cuisine Label

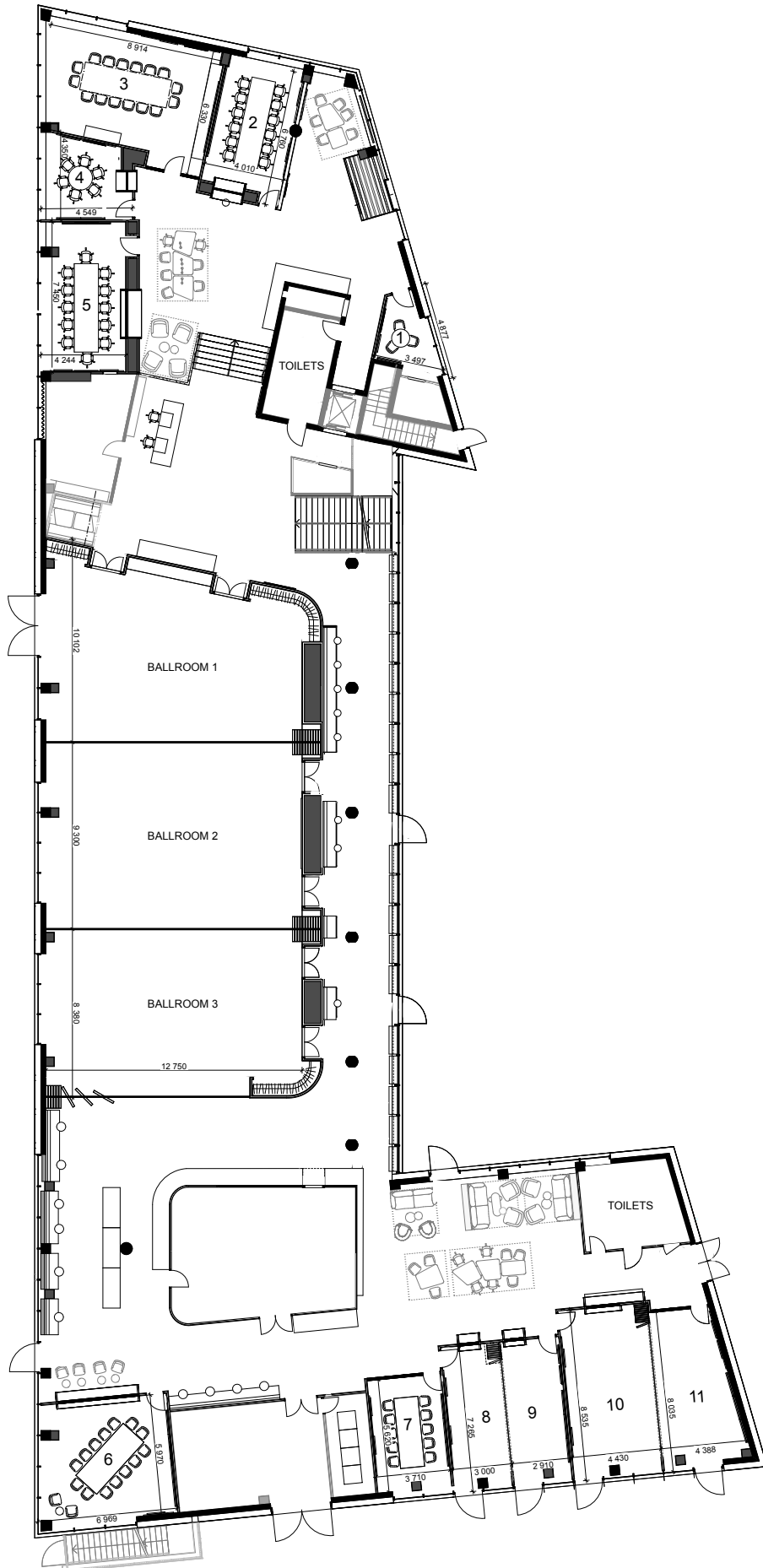
**Scandic**



Scandic Kødbyen has room for meetings and conferences for up to 310 people. The beautiful, flexible Ballroom can be divided into 3 separate rooms. The hotel can also provide 11 meeting rooms of various sizes. All rooms have natural light and plenty of space for creative expression. They are, of course, equipped with state-of-the-art AV equipment and free Wi-Fi.

Outside the meeting rooms there are bright, inspirational break areas with cosy seats ideal for small meetings and relaxation.

No./name	Daylight	m <sup>2</sup>	Boardroom 	U-shape 	Classroom 	Cabaret 	Theatre 	Blocks 
Ballroom 1	Yes	128	24	26	52	48	90	48
Ballroom 2	Yes	118	24	34	70	48	120	56
Ballroom 3	Yes	110	24	26	52	48	90	48
Ballroom 1+2	Yes	246	–	–	122	96	210	104
Ballroom 2+3	Yes	228	–	–	122	96	210	104
Ballroom 1+2+3	Yes	336	56	56	174	144	310	168
Lokale 1	Yes	9	3	–	–	–	–	–
Lokale 2	Yes	21	12	–	–	–	–	–
The Kitchen	Yes	57	16	–	–	–	–	–
Lokale 4	Yes	12	6	–	–	–	–	–
Lokale 5	Yes	32	12	–	–	–	–	–
Lokale 6	Yes	42	10	–	–	–	–	–
Lokale 7	Yes	28	10	–	–	–	–	–
Lokale 8	Yes	22	12	–	–	–	12	–
Lokale 9	Yes	23	12	–	–	–	12	–
Lokale 10	Yes	41	16	–	–	–	30	–
Lokale 11	Yes	31	16	–	–	–	30	–
Lokale 8+9	Yes	45	–	14	18	18	30	18
Lokale 10+11	Yes	72	–	20	32	32	45	32



# DIMENSIONS AND TECHNICAL SPECIFICATIONS

Name of room	Total m <sup>2</sup>	Length (m)	Width (m)	Height (m)	Usable height (m)
Ballroom 1	108	13,7	9,8	4,4	3,5
Ballroom 2	118	13,5	9	4,4	3,5
Ballroom 3	110	12,6	8,3	4,4	3,5
Bal 1+2	226	27,2	18,8	4,4	3,5
Bal 2+3	228	26,1	17,3	4,4	3,5
Bal 1+2+3	336	39,8	27,1	4,4	3,5
Meeting 1	9	3,3	2,3	3,3	2,5
Meeting 2	21	6,4	3,9	3,3	2,7
Meeting 3	57	8,1	5,3	3,3	2,7
Meeting 4	12	3,7	3,7	3,3	2,9
Meeting 5	32	7,1	3,9	3,3	2,9
Meeting 6	42	6,3	5,9	4,4	2,9
Meeting 7	28	5,9	3,6	4,4	2,9
Meeting 8	22	6,6	2,9	4,5	2,9
Meeting 9	23	6,6	2,9	4,5	2,9
Meeting 8+9	45	13,2	5,8	4,5	2,9
Meeting 10	41	7,8	4,3	4,4	2,9
Meeting 11	31	7,8	3,1	4,4	2,9
Meeting 10+11	72	15,6	7,4	4,4	2,9

## General

All rooms are equipped with Crestron touch panels to control the technical facilities, light and curtains. Simple to control and easy to use during your meetings.

All rooms are also equipped with network sockets, in case you require wired Internet connection for your event. The network connections are conveniently situated. The ballroom is also equipped with 3 400V 16A and 2 400V 32A power outlets for larger events.

### **Ballroom 1-3**

- 7 x Sony VPL-FHZ700L 7000 ansi lumens WUXGA Laser Projectors
- Screen size: 350x270 (WxH) 16:10 Format
- HDMI with adapter ring (Mini DP, DP and USB-C)
- Sound via 12 x JBL CBT70J-WH-1 speakers

### **Meeting Room 1**

- Sony 55" 4K TV
- Logitech Soundbar, with built-in Webcam, making the room ideal for a small-scale Skype meeting
- HDMI with adapter (Mini DP, DP and USB-C)

### **Meeting Room 2**

- Sony Full HD Laser Projector, 5000 Ansi lumens, 1920x1200 pixels
- Screen size: 244x277 (WxH) 16:10 format
- Sound via ceiling-mounted JBL Pendant speakers
- Barco Clickshare for wireless transfer of image and audio
- HDMI with adapter ring (Mini DP, DP and USB-C)

### **Meeting Room 3**

- Sony 75" 4K TV
- Clevertouch 65" touch screen for interactive use
- Barco Clickshare for wireless transfer of image and audio
- HDMI with adapter ring (Mini DP, DP and USB-C)

### **Meeting Room 4**

- Sony 65" 4K TV
- Logitech Soundbar, with built-in Webcam, making the room ideal for a small-scale Skype meeting.
- HDMI with adapter ring (Mini DP, DP and USB-C)

### **Meeting Room 5**

- Sony 85" 4K TV
- Sound via ceiling-mounted JBL Pendant speakers
- Barco Clickshare for wireless transfer of image and audio
- HDMI with adapter ring (Mini DP, DP and USB-C)
- Clevertouch 86" touch screen for interactive use

### **Meeting Room 6**

- Sony Full HD Laser Projector, 5000 Ansi lumens, 1920x1200 pixels
- Screen size: 244x277 (WxH) 16:10 format
- Sound via ceiling-mounted JBL Pendant speakers
- Barco Clickshare for wireless transfer of image and audio
- HDMI with adapter ring (Mini DP, DP and USB-C)
- Samsung 55" Digital flip board for notes.

### **Meeting Room 7**

- Sony Full HD Laser Projector, 5000 Ansi lumens, 1920x1200 pixels
- Screen size: 213x270 (WxH) 16:10 format
- Sound via ceiling-mounted JBL Pendant speakers
- HDMI with adapter ring (Mini DP, DP and USB-C)

### **Meeting Room 8**

- Sony Full HD Laser Projector, 5000 Ansi lumens, 1920x1200 pixels
- Screen size: 213x270 (WxH) 16:10 format
- Sound via ceiling-mounted JBL Pendant speakers
- HDMI with adapter ring (Mini DP, DP and USB-C)

### **Meeting Room 9**

- Sony Full HD Laser Projector, 5000 Ansi lumens, 1920x1200 pixels
- Screen size: 213x270 (WxH) 16:10 format
- Sound via ceiling-mounted JBL Pendant speakers
- HDMI with adapter ring (Mini DP, DP and USB-C)

### **Meeting Rooms 8 + 9**

- Sony Full HD Laser Projector, 5000 Ansi lumens, 1920x1200 pixels
- Screen size: 244x270 (WxH) 16:10 format
- Sound via ceiling-mounted JBL Pendant speakers
- HDMI with adapter ring (Mini DP, DP and USB-C)

### **Meeting Room 10**

- Sony Full HD Laser Projector, 5000 Ansi lumens, 1920x1200 pixels
- Screen size: 244x270 (WxH) 16:10 format
- Sound via ceiling-mounted JBL Pendant speakers
- HDMI with adapter ring (Mini DP, DP and USB-C)

### **Meeting Room 11**

- Sony Full HD Laser Projector, 5000 Ansi lumens, 1920x1200 pixels
- Screen size: 244x270 (WxH) 16:10 format
- Sound via ceiling-mounted JBL Pendant speakers
- HDMI with adapter ring (Mini DP, DP and USB-C)

### **Meeting Room 10 + 11**

- Sony Full HD Laser Projector, 5000 Ansi lumens, 1920x1200 pixels
- Screen size: 280x270 (WxH) 16:10 format
- Sound via ceiling-mounted JBL Pendant speakers
- HDMI with adapter ring (Mini DP, DP and USB-C)